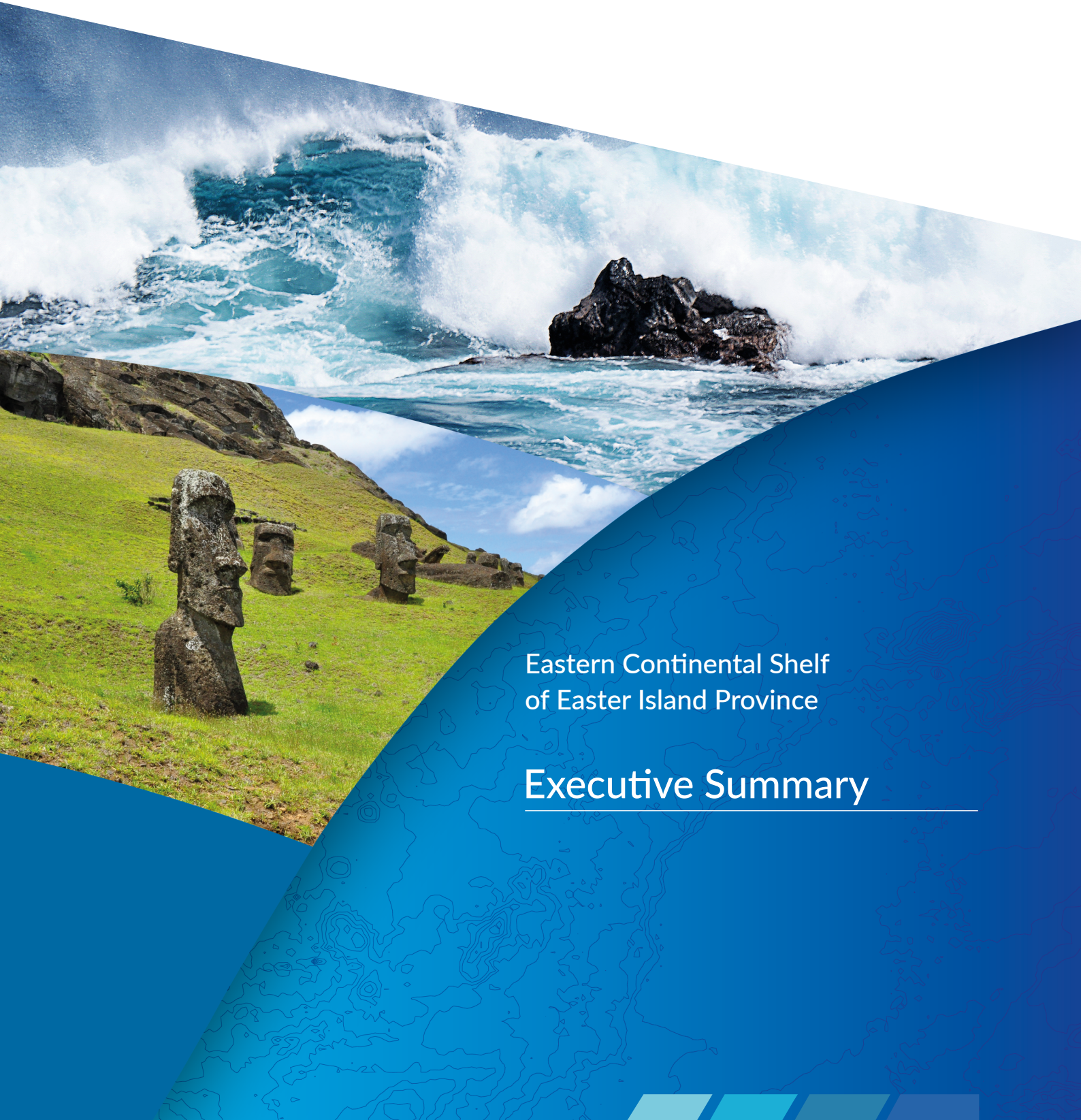




CONTINENTAL SHELF
NATIONAL COMMITTEE
CHILE



PARTIAL SUBMISSION OF CHILE TO THE COMMISSION
ON THE LIMITS OF THE CONTINENTAL SHELF



Eastern Continental Shelf
of Easter Island Province

Executive Summary



CONTINENTAL SHELF
NATIONAL COMMITTEE
CHILE



PARTIAL SUBMISSION OF CHILE TO THE COMMISSION
ON THE LIMITS OF THE CONTINENTAL SHELF

Eastern Continental Shelf
of Easter Island Province

Executive Summary





CONTINENTAL SHELF
NATIONAL COMMITTEE
CHILE



CREDITS

Continental Shelf National Committee

1. National Department of State Borders and Boundaries (DIFROL)
2. Ministry of Foreign Affairs of Chile
3. General Staff of the Navy
4. Ministry of Defense - Undersecretary of the Armed Forces
5. Chilean Antarctic Institute
6. Chilean Navy Hydrographic and Oceanographic Service
7. National Geology and Mining Service
8. Empresa Nacional del Petróleo (ENAP)
9. Chilean Military Geographic Institute
10. Continental Shelf Group (DIFROL)
11. Technical Advisory Group

Photographs: DIFROL, Alex Venegas
Printed by Chilean Military Geographic Institute

© Government of Chile 2020

TABLE OF CONTENTS

1. Introduction	05
2. Maps and coordinates	07
3. Commission members who provided advice	08
4. Provisions of Article 76 invoked in support of this Partial Submission	08
5. General description of the Eastern Continental Margin of Easter Island Province	09
6. Delineation of the Eastern Continental Shelf of Easter Island Province	12
7. Absence of dispute	14
Appendix 1: Coordinates and information on the Outer Limits of the Continental Shelf	15







1. Introduction

Chile is a State Party to the United Nations Convention on the Law of the Sea (hereinafter, the Convention) which, in accordance with Article 308(2), entered into force for Chile on 24 September 1997, 30 days after the deposit of its ratification instrument of the Convention to the United Nations Secretary-General.

As stated in Article 4 of Annex II to the Convention, a State that intends to establish the outer limits of its continental shelf beyond 200 nautical miles shall submit particulars of such limits to the Commission on the Limits of the Continental Shelf along with supporting scientific and technical data, within 10 years of the entry into force of the Convention for the relevant submitting coastal State.

At the eleventh Meeting of States Parties to the Convention, the States Parties adopted SPLOS/72 to the effect that the ten-year time period referred to in Article 4 of Annex II to the Convention shall be taken to have commenced on 13 May 1999, in the case of a State Party for which the Convention entered into force before 13 May 1999.

Noting the continuous challenges for States to fulfill the requirements in Article 4 of Annex II to the Convention, as well as the decision contained in SPLOS/72, paragraph (a), the States Parties adopted decision SPLOS/183 during the eighteenth Meeting of States Parties. The States Parties hereby agreed that the time period referred to in Article 4 of Annex II to the Convention, and decision SPLOS/72, paragraph (a), may be satisfied by submitting preliminary information indicative of the outer limits of the continental shelf and a description of the status of the preparation and intended date of making a submission to the United Nations Secretary-General.

In accordance with the decision contained in SPLOS/183, on 8 May 2009, Chile submitted preliminary information indicative of the outer limits of the continental shelf of Chile and a description of the status of preparation and intended date of making a submission to the Commission on the Limits of the Continental Shelf. Consistent with Article 1(c) of SPLOS/183, the submission of preliminary information indicative of the outer limits of the continental shelf of Chile was undertaken without prejudice to this Partial Submission or future partial submissions of Chile.

The Eastern Continental Shelf of Easter Island Province submission is the first partial submission of Chile. This Partial Submission will be followed by other partial submissions, the next being the partial submission regarding the Chilean Antarctic Territory. The collection and processing of supporting data regarding the remaining submission areas are in process and, in accordance with Article 4 of Annex II and the decisions contained in SPLOS/72 and SPLOS/183, they will be submitted to the Commission on the Limits of the Continental Shelf in due course.

As recognized in Article 77 of the Convention, the rights of the coastal State over the continental shelf exist *ipso facto* and *ab initio*; they do not depend on occupation, effective or notional, or on any express proclamation.

Nevertheless, Chile's proclamation of its sovereign rights over the continental shelf adjacent to its respective coastlines dates back to 1947. By Presidential Declaration of 23 June 1947, Chile proclaimed sovereign rights over the continental shelf and waters adjacent to its insular and continental coasts, as well as control over all natural resources contained therein. As concerns the continental shelf, Chile's proclamation followed the Truman Proclamation of 28 September 1945, which marks the starting point for the establishment of a rule of customary law, according to which coastal States are vested with inherent rights to the continental shelf adjacent to their coastlines, subsequently codified in Article 2 of the 1958 Geneva Convention on the Continental Shelf.

At the 1952 Santiago Conference, on 18 August, Chile, Ecuador and Peru concluded the Declaration on the Maritime Zone (Santiago Declaration), claiming exclusive sovereignty and jurisdiction over the sea along the coasts of their respective countries to a minimum distance of 200 nautical miles from these coasts, and making it explicit in Article III that this exclusive sovereignty and jurisdiction extended to "the seabed and the subsoil thereof".

Therefore, Chile has proclaimed its exclusive sovereignty and jurisdiction over the sea, seabed and subsoil adjacent both to its insular and continental territories before the negotiations of the 1958 Geneva Convention on the Continental Shelf and before the commencement of the Third United Nations Conference on the Law of the Sea. Subsequently, Chile has exercised its rights and jurisdiction over the maritime spaces in accordance with customary international law.

Easter Island Province is composed of two islands, namely Easter Island (native name, 'Rapa Nui') and Salas y Gómez Island (native name, 'Motu Motiro Hiva'), which are located 3,700 and 3,200 kilometers, respectively, from the Chilean coast.

By Law 16441, enacted on 22 February 1966, Chile created the Department of Easter Island, comprising Easter Island and Salas y Gómez Island, organized administratively within the Province of Valparaíso. In 1976, by Decree-Law 1317, the Easter Island Department changed its name to Easter Island Province, becoming one of the provinces that are part of the Valparaíso Region.

On 4 December 2010, Chile created the *Motu Motiro Hiva* Marine Park, commonly known as the Salas y Gómez Marine Park, which covers an area of 150,000 square kilometers within the exclusive economic zone adjacent to Salas y Gómez Island. On 8 June 2018, Chile created the Protected Coastal Marine Area of Multiple Uses *Rapa Nui*, which covers an area of 579,368 square kilometers encompassing the exclusive economic zone of Easter Island Province.

2. Maps and coordinates

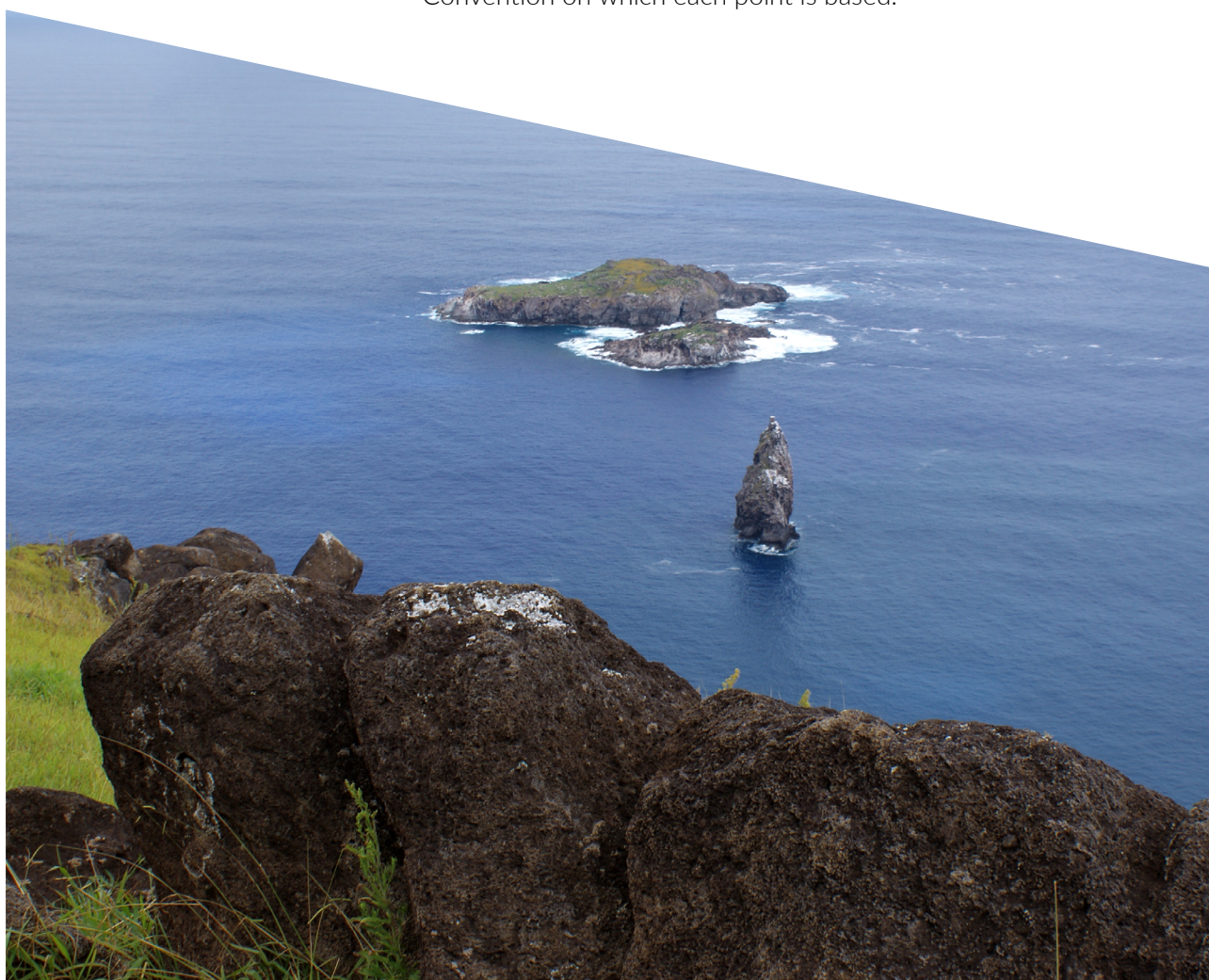
This Partial Submission deals with the outer limits of the Eastern Continental Shelf of Easter Island Province.

The data and information contained in this Partial Submission enable the establishment of the outer limits of the Eastern Continental Shelf of Easter Island Province, where those limits extend beyond 200 nautical miles from the baselines from which the breadth of the territorial sea is measured.

Two maps are included in this Executive Summary. The first map (Figure 1) gives an overview of the relevant area, including key geographic names. The second map (Figure 2) shows the outer limits of the Eastern Continental Shelf of Easter Island Province.

Geographic coordinates shown in tables and maps are defined using the WGS 1984 system.

Appendix 1 contains the coordinates used to define the outer limits of the continental shelf beyond 200 nautical miles, the distance between adjacent points in nautical miles, and the provision of Article 76 of the Convention on which each point is based.





3. Commission members who provided advice

In accordance with Rule 45(b) of the Rules of Procedure of the Commission on the Limits of the Continental Shelf (CLCS/40/Rev.1), Chile informs that Mr. Gonzalo Yáñez Carrizo, member of the Commission on the Limits of the Continental Shelf (2017 - present), has assisted Chile in the preparation of this Partial Submission.

4. Provisions of Article 76 invoked in support of this Partial Submission

Chile invokes the provisions of paragraphs 1, 3, 4, 5, 6 and 7 of Article 76 of the Convention in support of the establishment of the outer limits of the Eastern Continental Shelf of Easter Island Province.

A total of 14 foot of the continental slope points contributing to the establishment of the outer edge of the Eastern Continental Margin of Easter Island Province have been determined in accordance with the general rule contained in Article 76(4)(b) of the Convention.

All fixed points constituting the outer edge of the Eastern Continental Margin of Easter Island Province have been determined in accordance with the Hedberg formula contained in Article 76(4)(a)(ii) of the Convention.

The classification of the seafloor high that generates the establishment of the outer edge of the Eastern Continental Margin of Easter Island Province is in accordance with Article 76(6) of the Convention.

5. General description of the Eastern Continental Margin of Easter Island Province

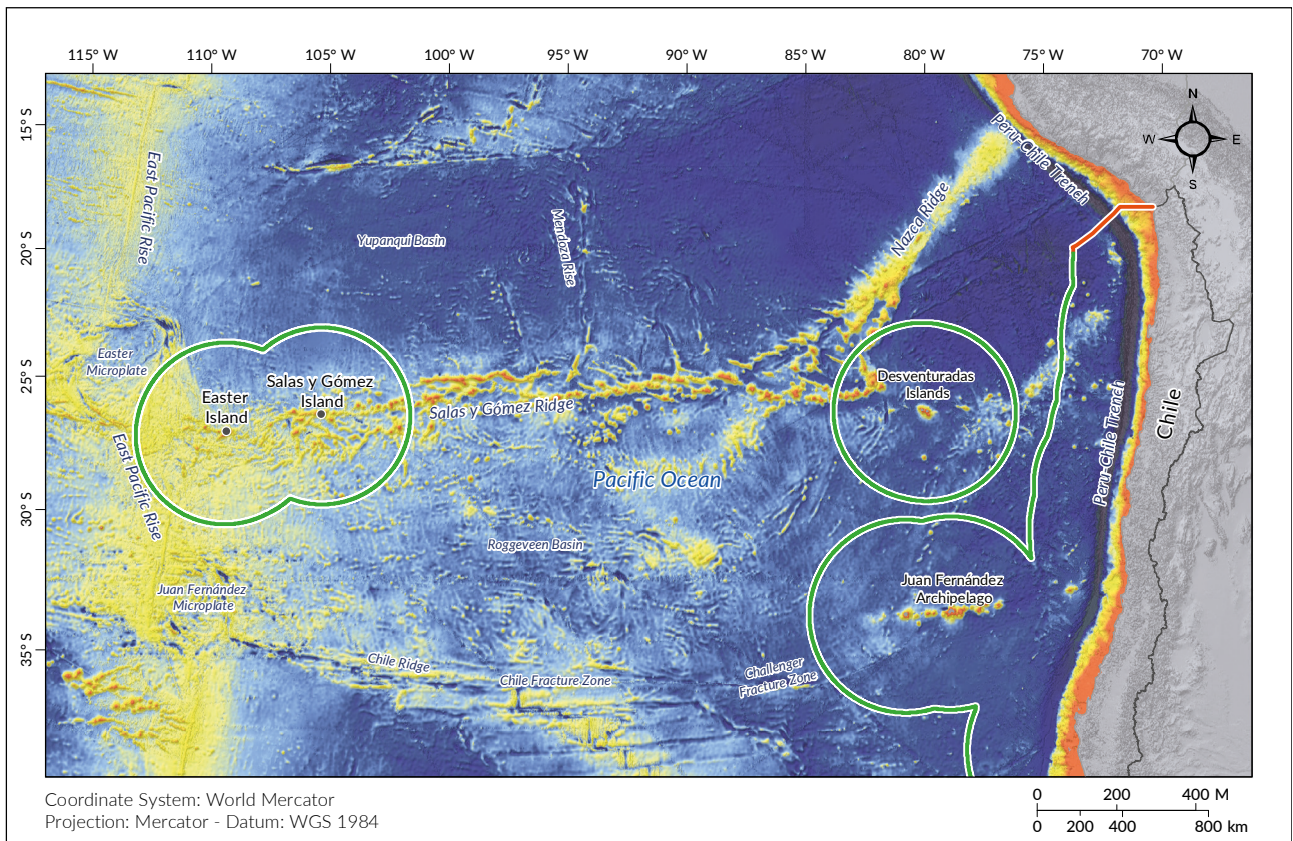
The Easter Island and Salas y Gómez Island are situated on the Nazca lithospheric plate to the east of the East Pacific Rise and Easter microplate.

Easter Island is comprised of three major active eruptive centers cornering its southwestern, eastern and northern vertices - named Rano Kao, Poike and Terevaka volcanoes, respectively - as well as a series of minor, isolated pyroclastic cones and monogenetic volcanoes. The volcanic rocks of the island have been emplaced, for the most part, within the last million years and are predominantly alkalic basalts (hawaiites and mugearites), typical of hotspot, oceanic island basalts environments, although tholeiite basalts are also present. Salas y Gómez Island is mainly composed of a sequence of subhorizontal lava flows, which in turn can be grouped, from top to bottom, into two main units based on their petrographic distinctions, contact structure, and spatial distribution. The rocks of the lower, oldest unit are vesicular, red to dark-gray olivine basalts showing pillow structures at the base, evidencing submarine volcanism. The upper unit, which lies conformably on top of the lower unit, is dense, fine-grained, dark-gray olivine basalts. Both are lavas of the type hawaiites/mugearites, and are of alkaline composition, representing melting and magmatic segregation at deep levels in the mantle, typical of hotspot ocean island basalts.

Modern multibeam, high-resolution data and seafloor mapping demonstrate that the Salas y Gómez Ridge is the submerged prolongation of the land mass of Easter Island Province. Along its approximately east-west trend, this first-order tectonic feature extends for more than 3,000 kilometers across the Nazca Plate, reaching elevations of up to 4 kilometers relative to its base and the surrounding deep ocean floor, and widths of a couple of hundreds of kilometers. The morphology of the ridge resembles the breadth of some of the major orogenic belts of the planet. The Salas y Gómez Ridge owes its origin to the long-lived intrusion of a mantle plume underlying the Nazca Plate. Mantle plumes are large-scale thermal and compositional perturbations rising from the Earth's lower mantle which are relatively fixed with respect to the tectonic plates circuit. The base of the Easter mantle plume is probably deep-seated at the core-mantle boundary. As the Nazca Plate moves over the mantle plume away from the spreading center, the plume's magma erupts to the surface and perturbs the lithosphere, constructing a mountain chain of volcanoes. The youngest rocks are close to the mantle plume head, growing progressively older with increasing distance from the apex of the head, however retaining their unique and distinct petrological signature. The age progression and chemical affinity of the Salas y Gómez Ridge have been extensively documented by radiometric dating, trace elements abundances and isotopic content measured from dredged and on-land samples, demonstrating that the oldest rocks erupted more than 30 million years ago.

Moreover, geophysical surveys, such as seismic reflection and gravimetric measurements, as well as mechanical modeling, reveal that an anomalously thick crust - exceeding 15 kilometers in some sections, representing a twofold increase with respect to the typical oceanic crust - is associated with the deep structure of Easter Island Province and is continuous along the entire length of the Salas y Gómez Ridge. The presence of this continuous crustal root further documents the differential construction of Easter Island Province, of which the Salas y Gómez Ridge is the submerged prolongation. The geophysical data are conclusive in demonstrating that the thickened crust forming the Salas y Gómez Ridge is significantly distinct from the normal, oceanic crustal structure of the Nazca Plate.





CONTINENTAL SHELF
 NATIONAL COMMITTEE
 CHILE

GEOGRAPHIC SETTING OF EASTER ISLAND PROVINCE

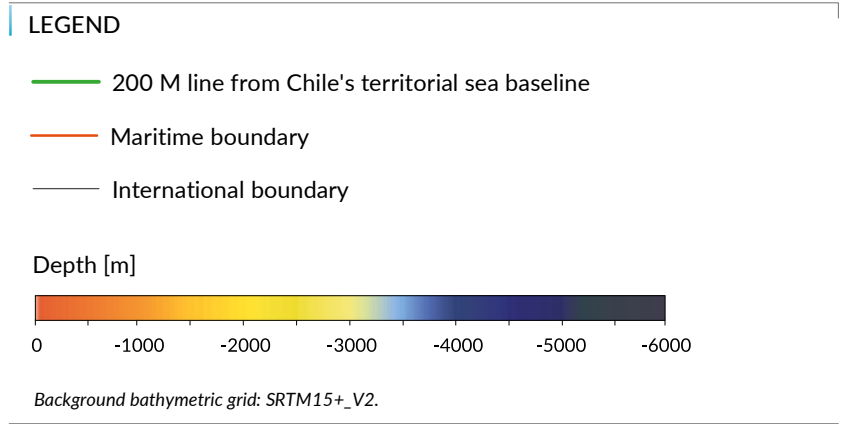
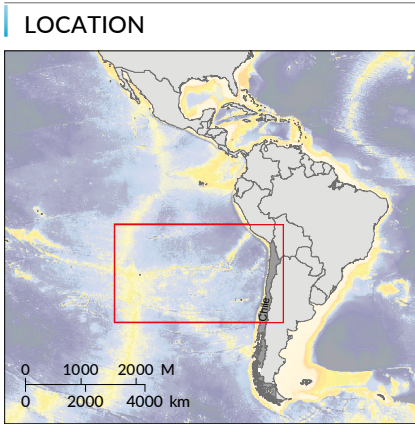


Figure 1. Map of the region related to the Partial Submission of Eastern Continental Shelf of Easter Island Province. The figure shows the bathymetry and major regional morphological features.

6. Delineation of the Eastern Continental Shelf of Easter Island Province

Chile is vested with sovereign and exclusive rights for the purposes of exploring the continental shelf and exploiting its natural resources.

The outer edge of the Eastern Continental Margin of Easter Island Province extends beyond the 200 nautical miles distance line. Consequently, Chile submits this Partial Submission pursuant to Article 76(8) of the Convention, read in conjunction with Article 4 of Annex II to the Convention.

Morphological and bathymetric data, in conjunction with relevant geological and geophysical data, underlying this Partial Submission demonstrate, consistent with Article 76(3) and Article 76(4)(b) of the Convention, a continuous continental margin. The information and data that were hitherto collected and processed unequivocally allow the establishment of the outer edge of the continental margin at a point which is located 503.0 nautical miles from the baselines from which the breadth of the territorial sea is measured.

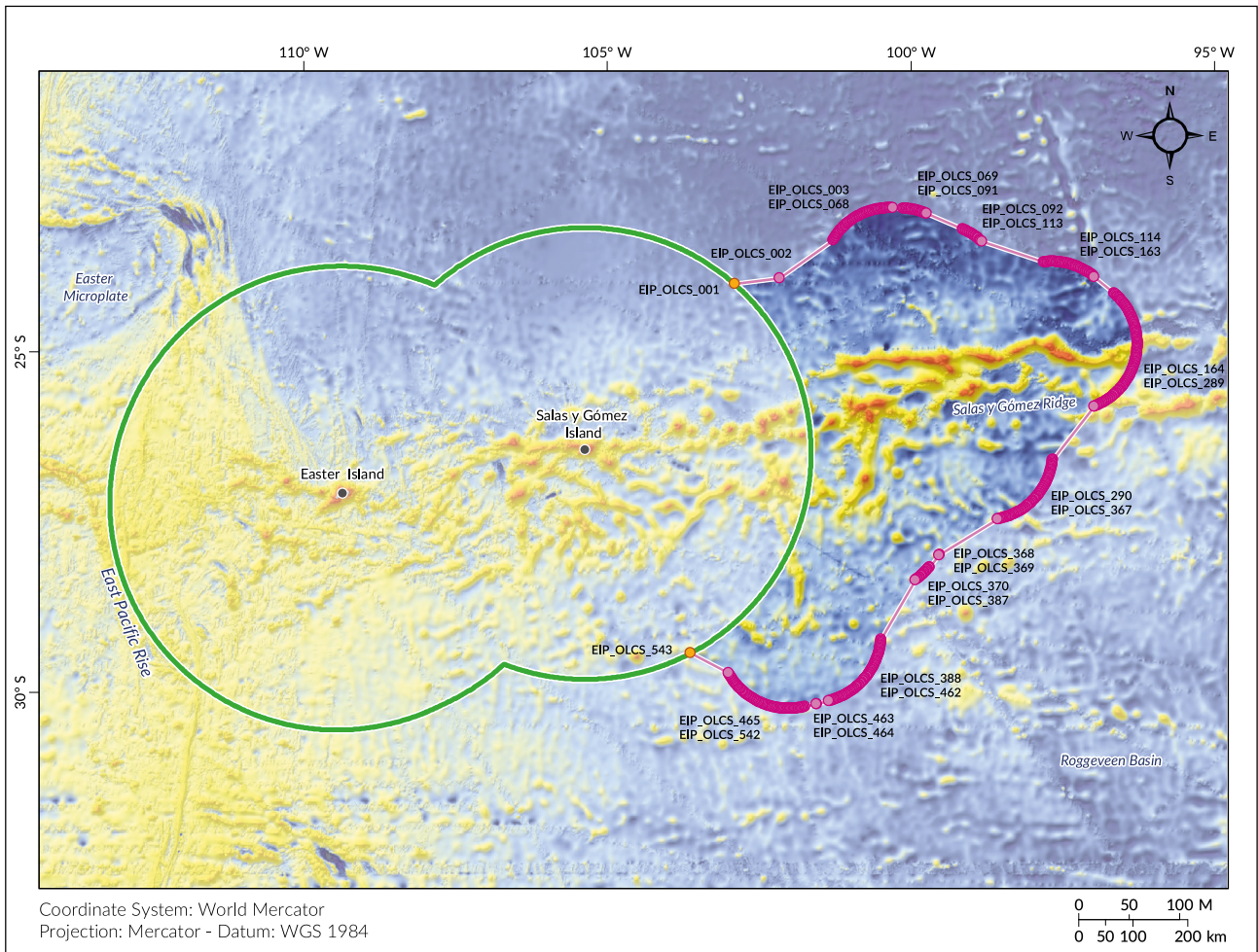
According to Article 76(6) of the Convention, Chile may use either of the two enumerated constraints provided in Article 76(5), provided it is documented that the seafloor high generating the outer edge of the continental margin is natural component of the continental margin that constitutes the submerged prolongation of the land mass.

Consistent with Article 76(6) of the Convention, two criteria need to be fulfilled in order to demonstrate that seafloor highs are submarine elevations that are natural components of the continental margin. Both criteria rely on the demonstration of continuity from the seafloor highs that generate the establishment of the outer edge of the continental margin to the land mass from which the seafloor high is the submerged prolongation.

Firstly, Chile has demonstrated that the seafloor high is morphologically continuous with the land mass from which constitutes the submerged prolongation. This exercise has been conducted in a manner consistent with Article 76(3) and Article 76(4)(b) of the Convention as reflected in Chapter 5 of the Scientific & Technical Guidelines of the Commission on the Limits of the Continental Shelf (CLCS/11). Accordingly, a continuous envelope of the base of the continental slope region is identified within which all the foot of the continental slope points are determined. Secondly, Chile has demonstrated that the seafloor high is natural component of the continental margin. Chile has undertaken this operation consistent with Article 76(6) of the Convention and, as appropriate, in accordance with point 7.3.1 of the Scientific & Technical Guidelines. Consequently, Chile has collected data and information evidencing that the relevant seafloor high, in addition to being morphologically continuous with, also share geological characteristics with the land mass from which the seafloor high constitutes the submerged prolongation.

The most seaward fixed point, determined in accordance with Article 76(4)(a)(ii) of the Convention, exceeds 350 nautical miles from the baselines from which the breadth of the territorial sea is measured. Throughout the Eastern Continental Margin of Easter Island Province, the outer edge of the continental margin is located landward of the 2,500 meters plus 100 nautical miles depth constraint, in which all the relevant 2,500 meter depth points are located landward of the foot of the continental slope points. Consequently, throughout this Partial Submission, the outer edge of the continental margin constitutes the outer limits of the Eastern Continental Shelf of Easter Island Province.

Consistent with Article 76(7) of the Convention, the outer limits are delineated by straight lines not exceeding 60 nautical miles in length, connecting fixed points defined by coordinates of latitude and longitude.



CONTINENTAL SHELF
NATIONAL COMMITTEE
CHILE

THE OUTER LIMITS OF THE EASTERN CONTINENTAL SHELF OF EASTER ISLAND PROVINCE

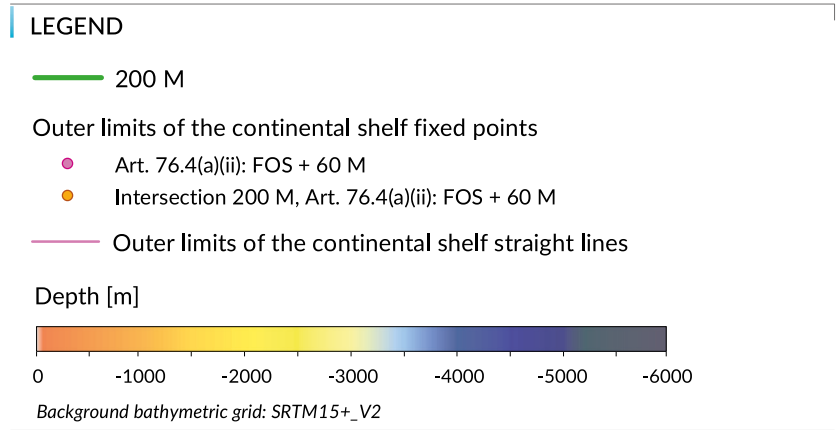
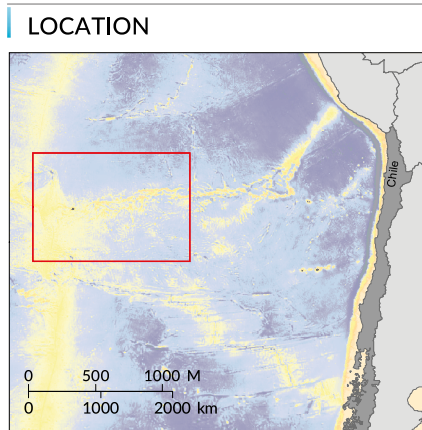


Figure 2. Map showing the outer limits of the Eastern Continental Shelf of Easter Island Province.

7. Absence of dispute

The entitlement of Chile to the Eastern Continental Shelf of Easter Island Province does not overlap with entitlements of any third State. Accordingly, Chile is the sole holder of entitlement to the entire area encapsulated within the outer limits of the Eastern Continental Shelf of Easter Island Province.



Appendix 1

Coordinates and information on the Outer Limits of the Continental Shelf





TABLE 1

List of coordinates and the Article 76 provision invoked in the establishment of each fixed point describing the outer limits of the Eastern Continental Shelf of Easter Island Province.

Outer limit of the continental shelf fixed point	Latitude [decimal degrees]	Longitude [decimal degrees]	Distance to next point [M]	Article 76 provision invoked
EIP_OLCS_001	-23.983857	-102.902942	41.293	Intersection 200 M, Art. 76.4(a)(ii): FOS + 60 M
EIP_OLCS_002	-23.895692	-102.157856	59.419	Art. 76.4(a)(ii): FOS + 60 M
EIP_OLCS_003	-23.320007	-101.279026	1.000	Art. 76.4(a)(ii): FOS + 60 M
EIP_OLCS_004	-23.305718	-101.269621	1.000	Art. 76.4(a)(ii): FOS + 60 M
EIP_OLCS_005	-23.291575	-101.259961	1.000	Art. 76.4(a)(ii): FOS + 60 M
EIP_OLCS_006	-23.277582	-101.250049	1.000	Art. 76.4(a)(ii): FOS + 60 M
EIP_OLCS_007	-23.263743	-101.239888	1.000	Art. 76.4(a)(ii): FOS + 60 M
EIP_OLCS_008	-23.250061	-101.229481	1.000	Art. 76.4(a)(ii): FOS + 60 M
EIP_OLCS_009	-23.236541	-101.218831	1.000	Art. 76.4(a)(ii): FOS + 60 M
EIP_OLCS_010	-23.223186	-101.207940	1.000	Art. 76.4(a)(ii): FOS + 60 M
EIP_OLCS_011	-23.209999	-101.196813	1.000	Art. 76.4(a)(ii): FOS + 60 M
EIP_OLCS_012	-23.196985	-101.185451	1.000	Art. 76.4(a)(ii): FOS + 60 M
EIP_OLCS_013	-23.184147	-101.173859	1.000	Art. 76.4(a)(ii): FOS + 60 M
EIP_OLCS_014	-23.171489	-101.162039	1.000	Art. 76.4(a)(ii): FOS + 60 M
EIP_OLCS_015	-23.159013	-101.149995	1.000	Art. 76.4(a)(ii): FOS + 60 M
EIP_OLCS_016	-23.146724	-101.137730	1.000	Art. 76.4(a)(ii): FOS + 60 M
EIP_OLCS_017	-23.134625	-101.125247	1.000	Art. 76.4(a)(ii): FOS + 60 M
EIP_OLCS_018	-23.122718	-101.112550	1.000	Art. 76.4(a)(ii): FOS + 60 M
EIP_OLCS_019	-23.111008	-101.099643	1.000	Art. 76.4(a)(ii): FOS + 60 M
EIP_OLCS_020	-23.099497	-101.086529	1.000	Art. 76.4(a)(ii): FOS + 60 M
EIP_OLCS_021	-23.088189	-101.073211	1.000	Art. 76.4(a)(ii): FOS + 60 M
EIP_OLCS_022	-23.077086	-101.059694	1.000	Art. 76.4(a)(ii): FOS + 60 M
EIP_OLCS_023	-23.066193	-101.045981	1.000	Art. 76.4(a)(ii): FOS + 60 M
EIP_OLCS_024	-23.055511	-101.032076	1.000	Art. 76.4(a)(ii): FOS + 60 M
EIP_OLCS_025	-23.045043	-101.017983	1.000	Art. 76.4(a)(ii): FOS + 60 M
EIP_OLCS_026	-23.034794	-101.003705	1.000	Art. 76.4(a)(ii): FOS + 60 M
EIP_OLCS_027	-23.024764	-100.989247	1.000	Art. 76.4(a)(ii): FOS + 60 M
EIP_OLCS_028	-23.014958	-100.974612	1.000	Art. 76.4(a)(ii): FOS + 60 M
EIP_OLCS_029	-23.005377	-100.959805	1.000	Art. 76.4(a)(ii): FOS + 60 M
EIP_OLCS_030	-22.996024	-100.944830	1.000	Art. 76.4(a)(ii): FOS + 60 M
EIP_OLCS_031	-22.986903	-100.929690	1.000	Art. 76.4(a)(ii): FOS + 60 M
EIP_OLCS_032	-22.978014	-100.914390	1.000	Art. 76.4(a)(ii): FOS + 60 M
EIP_OLCS_033	-22.969362	-100.898935	1.000	Art. 76.4(a)(ii): FOS + 60 M
EIP_OLCS_034	-22.960948	-100.883328	1.000	Art. 76.4(a)(ii): FOS + 60 M

Outer limit of the continental shelf fixed point	Latitude [decimal degrees]	Longitude [decimal degrees]	Distance to next point [M]	Article 76 provision invoked
EIP_OLCS_035	-22.952774	-100.867573	1.000	Art. 76.4(a)(ii): FOS + 60 M
EIP_OLCS_036	-22.944843	-100.851675	1.000	Art. 76.4(a)(ii): FOS + 60 M
EIP_OLCS_037	-22.937156	-100.835639	1.000	Art. 76.4(a)(ii): FOS + 60 M
EIP_OLCS_038	-22.929717	-100.819469	1.000	Art. 76.4(a)(ii): FOS + 60 M
EIP_OLCS_039	-22.922527	-100.803168	1.000	Art. 76.4(a)(ii): FOS + 60 M
EIP_OLCS_040	-22.915587	-100.786742	1.000	Art. 76.4(a)(ii): FOS + 60 M
EIP_OLCS_041	-22.908900	-100.770196	1.000	Art. 76.4(a)(ii): FOS + 60 M
EIP_OLCS_042	-22.902468	-100.753532	1.000	Art. 76.4(a)(ii): FOS + 60 M
EIP_OLCS_043	-22.896292	-100.736757	1.000	Art. 76.4(a)(ii): FOS + 60 M
EIP_OLCS_044	-22.890375	-100.719875	1.000	Art. 76.4(a)(ii): FOS + 60 M
EIP_OLCS_045	-22.884717	-100.702890	1.000	Art. 76.4(a)(ii): FOS + 60 M
EIP_OLCS_046	-22.879320	-100.685807	1.000	Art. 76.4(a)(ii): FOS + 60 M
EIP_OLCS_047	-22.874186	-100.668631	1.000	Art. 76.4(a)(ii): FOS + 60 M
EIP_OLCS_048	-22.869316	-100.651365	1.000	Art. 76.4(a)(ii): FOS + 60 M
EIP_OLCS_049	-22.864711	-100.634016	1.000	Art. 76.4(a)(ii): FOS + 60 M
EIP_OLCS_050	-22.860373	-100.616588	1.000	Art. 76.4(a)(ii): FOS + 60 M
EIP_OLCS_051	-22.856303	-100.599085	1.000	Art. 76.4(a)(ii): FOS + 60 M
EIP_OLCS_052	-22.852501	-100.581512	1.000	Art. 76.4(a)(ii): FOS + 60 M
EIP_OLCS_053	-22.848970	-100.563875	1.000	Art. 76.4(a)(ii): FOS + 60 M
EIP_OLCS_054	-22.845710	-100.546177	1.000	Art. 76.4(a)(ii): FOS + 60 M
EIP_OLCS_055	-22.842721	-100.528424	1.000	Art. 76.4(a)(ii): FOS + 60 M
EIP_OLCS_056	-22.840005	-100.510620	1.000	Art. 76.4(a)(ii): FOS + 60 M
EIP_OLCS_057	-22.837562	-100.492770	1.000	Art. 76.4(a)(ii): FOS + 60 M
EIP_OLCS_058	-22.835394	-100.474880	1.000	Art. 76.4(a)(ii): FOS + 60 M
EIP_OLCS_059	-22.833500	-100.456954	1.000	Art. 76.4(a)(ii): FOS + 60 M
EIP_OLCS_060	-22.831881	-100.438996	1.000	Art. 76.4(a)(ii): FOS + 60 M
EIP_OLCS_061	-22.830538	-100.421013	1.000	Art. 76.4(a)(ii): FOS + 60 M
EIP_OLCS_062	-22.829471	-100.403008	1.000	Art. 76.4(a)(ii): FOS + 60 M
EIP_OLCS_063	-22.828680	-100.384986	1.000	Art. 76.4(a)(ii): FOS + 60 M
EIP_OLCS_064	-22.828165	-100.366953	1.000	Art. 76.4(a)(ii): FOS + 60 M
EIP_OLCS_065	-22.827927	-100.348913	1.000	Art. 76.4(a)(ii): FOS + 60 M
EIP_OLCS_066	-22.827966	-100.330872	1.000	Art. 76.4(a)(ii): FOS + 60 M
EIP_OLCS_067	-22.828281	-100.312833	1.000	Art. 76.4(a)(ii): FOS + 60 M
EIP_OLCS_068	-22.828873	-100.294803	9.431	Art. 76.4(a)(ii): FOS + 60 M
EIP_OLCS_069	-22.834932	-100.124766	1.000	Art. 76.4(a)(ii): FOS + 60 M
EIP_OLCS_070	-22.835689	-100.106742	1.000	Art. 76.4(a)(ii): FOS + 60 M
EIP_OLCS_071	-22.836722	-100.088734	1.000	Art. 76.4(a)(ii): FOS + 60 M

Outer limit of the continental shelf fixed point	Latitude [decimal degrees]	Longitude [decimal degrees]	Distance to next point [M]	Article 76 provision invoked
EIP_OLCS_072	-22.838031	-100.070746	1.000	Art. 76.4(a)(ii): FOS + 60 M
EIP_OLCS_073	-22.839615	-100.052784	1.000	Art. 76.4(a)(ii): FOS + 60 M
EIP_OLCS_074	-22.841475	-100.034853	1.000	Art. 76.4(a)(ii): FOS + 60 M
EIP_OLCS_075	-22.843610	-100.016957	1.000	Art. 76.4(a)(ii): FOS + 60 M
EIP_OLCS_076	-22.846018	-99.999102	1.000	Art. 76.4(a)(ii): FOS + 60 M
EIP_OLCS_077	-22.848700	-99.981291	1.000	Art. 76.4(a)(ii): FOS + 60 M
EIP_OLCS_078	-22.851655	-99.963530	1.000	Art. 76.4(a)(ii): FOS + 60 M
EIP_OLCS_079	-22.854881	-99.945825	1.000	Art. 76.4(a)(ii): FOS + 60 M
EIP_OLCS_080	-22.858379	-99.928178	1.000	Art. 76.4(a)(ii): FOS + 60 M
EIP_OLCS_081	-22.862147	-99.910597	1.000	Art. 76.4(a)(ii): FOS + 60 M
EIP_OLCS_082	-22.866184	-99.893084	1.000	Art. 76.4(a)(ii): FOS + 60 M
EIP_OLCS_083	-22.870489	-99.875645	1.000	Art. 76.4(a)(ii): FOS + 60 M
EIP_OLCS_084	-22.875060	-99.858285	1.000	Art. 76.4(a)(ii): FOS + 60 M
EIP_OLCS_085	-22.879897	-99.841009	1.000	Art. 76.4(a)(ii): FOS + 60 M
EIP_OLCS_086	-22.884999	-99.823820	1.000	Art. 76.4(a)(ii): FOS + 60 M
EIP_OLCS_087	-22.890363	-99.806724	1.000	Art. 76.4(a)(ii): FOS + 60 M
EIP_OLCS_088	-22.895989	-99.789726	1.000	Art. 76.4(a)(ii): FOS + 60 M
EIP_OLCS_089	-22.901874	-99.772830	1.000	Art. 76.4(a)(ii): FOS + 60 M
EIP_OLCS_090	-22.908018	-99.756041	1.000	Art. 76.4(a)(ii): FOS + 60 M
EIP_OLCS_091	-22.914418	-99.739362	35.679	Art. 76.4(a)(ii): FOS + 60 M
EIP_OLCS_092	-23.149283	-99.146743	1.000	Art. 76.4(a)(ii): FOS + 60 M
EIP_OLCS_093	-23.155896	-99.130132	1.000	Art. 76.4(a)(ii): FOS + 60 M
EIP_OLCS_094	-23.162763	-99.113641	1.000	Art. 76.4(a)(ii): FOS + 60 M
EIP_OLCS_095	-23.169880	-99.097275	1.000	Art. 76.4(a)(ii): FOS + 60 M
EIP_OLCS_096	-23.177248	-99.081037	1.000	Art. 76.4(a)(ii): FOS + 60 M
EIP_OLCS_097	-23.184862	-99.064933	1.000	Art. 76.4(a)(ii): FOS + 60 M
EIP_OLCS_098	-23.192723	-99.048966	1.000	Art. 76.4(a)(ii): FOS + 60 M
EIP_OLCS_099	-23.200826	-99.033141	1.000	Art. 76.4(a)(ii): FOS + 60 M
EIP_OLCS_100	-23.209171	-99.017463	1.000	Art. 76.4(a)(ii): FOS + 60 M
EIP_OLCS_101	-23.217754	-99.001935	1.000	Art. 76.4(a)(ii): FOS + 60 M
EIP_OLCS_102	-23.226574	-98.986562	1.000	Art. 76.4(a)(ii): FOS + 60 M
EIP_OLCS_103	-23.235627	-98.971348	1.000	Art. 76.4(a)(ii): FOS + 60 M
EIP_OLCS_104	-23.244913	-98.956298	1.000	Art. 76.4(a)(ii): FOS + 60 M
EIP_OLCS_105	-23.254427	-98.941415	1.000	Art. 76.4(a)(ii): FOS + 60 M
EIP_OLCS_106	-23.264168	-98.926703	1.000	Art. 76.4(a)(ii): FOS + 60 M
EIP_OLCS_107	-23.274133	-98.912167	1.000	Art. 76.4(a)(ii): FOS + 60 M
EIP_OLCS_108	-23.284319	-98.897811	1.000	Art. 76.4(a)(ii): FOS + 60 M

Outer limit of the continental shelf fixed point	Latitude [decimal degrees]	Longitude [decimal degrees]	Distance to next point [M]	Article 76 provision invoked
EIP_OLCS_109	-23.294723	-98.883638	1.000	Art. 76.4(a)(ii): FOS + 60 M
EIP_OLCS_110	-23.305342	-98.869652	1.000	Art. 76.4(a)(ii): FOS + 60 M
EIP_OLCS_111	-23.316174	-98.855858	1.000	Art. 76.4(a)(ii): FOS + 60 M
EIP_OLCS_112	-23.327216	-98.842259	1.000	Art. 76.4(a)(ii): FOS + 60 M
EIP_OLCS_113	-23.338464	-98.828859	59.382	Art. 76.4(a)(ii): FOS + 60 M
EIP_OLCS_114	-23.652385	-97.807406	1.000	Art. 76.4(a)(ii): FOS + 60 M
EIP_OLCS_115	-23.650455	-97.789375	1.000	Art. 76.4(a)(ii): FOS + 60 M
EIP_OLCS_116	-23.648801	-97.771312	1.000	Art. 76.4(a)(ii): FOS + 60 M
EIP_OLCS_117	-23.647422	-97.753221	1.000	Art. 76.4(a)(ii): FOS + 60 M
EIP_OLCS_118	-23.646318	-97.735109	1.000	Art. 76.4(a)(ii): FOS + 60 M
EIP_OLCS_119	-23.645491	-97.716979	1.000	Art. 76.4(a)(ii): FOS + 60 M
EIP_OLCS_120	-23.644940	-97.698837	1.000	Art. 76.4(a)(ii): FOS + 60 M
EIP_OLCS_121	-23.644665	-97.680688	1.000	Art. 76.4(a)(ii): FOS + 60 M
EIP_OLCS_122	-23.644668	-97.662536	1.000	Art. 76.4(a)(ii): FOS + 60 M
EIP_OLCS_123	-23.644946	-97.644387	1.000	Art. 76.4(a)(ii): FOS + 60 M
EIP_OLCS_124	-23.645501	-97.626246	1.000	Art. 76.4(a)(ii): FOS + 60 M
EIP_OLCS_125	-23.646333	-97.608116	1.000	Art. 76.4(a)(ii): FOS + 60 M
EIP_OLCS_126	-23.647440	-97.590004	1.000	Art. 76.4(a)(ii): FOS + 60 M
EIP_OLCS_127	-23.648823	-97.571914	1.000	Art. 76.4(a)(ii): FOS + 60 M
EIP_OLCS_128	-23.650482	-97.553851	1.000	Art. 76.4(a)(ii): FOS + 60 M
EIP_OLCS_129	-23.652415	-97.535820	1.000	Art. 76.4(a)(ii): FOS + 60 M
EIP_OLCS_130	-23.654623	-97.517826	1.000	Art. 76.4(a)(ii): FOS + 60 M
EIP_OLCS_131	-23.657105	-97.499874	1.000	Art. 76.4(a)(ii): FOS + 60 M
EIP_OLCS_132	-23.659860	-97.481969	1.000	Art. 76.4(a)(ii): FOS + 60 M
EIP_OLCS_133	-23.662888	-97.464115	1.000	Art. 76.4(a)(ii): FOS + 60 M
EIP_OLCS_134	-23.666187	-97.446317	1.000	Art. 76.4(a)(ii): FOS + 60 M
EIP_OLCS_135	-23.669756	-97.428581	1.000	Art. 76.4(a)(ii): FOS + 60 M
EIP_OLCS_136	-23.673596	-97.410910	1.000	Art. 76.4(a)(ii): FOS + 60 M
EIP_OLCS_137	-23.677704	-97.393311	1.000	Art. 76.4(a)(ii): FOS + 60 M
EIP_OLCS_138	-23.682080	-97.375787	1.000	Art. 76.4(a)(ii): FOS + 60 M
EIP_OLCS_139	-23.686722	-97.358344	1.000	Art. 76.4(a)(ii): FOS + 60 M
EIP_OLCS_140	-23.691629	-97.340985	1.000	Art. 76.4(a)(ii): FOS + 60 M
EIP_OLCS_141	-23.696800	-97.323717	1.000	Art. 76.4(a)(ii): FOS + 60 M
EIP_OLCS_142	-23.702233	-97.306543	1.000	Art. 76.4(a)(ii): FOS + 60 M
EIP_OLCS_143	-23.707927	-97.289468	1.000	Art. 76.4(a)(ii): FOS + 60 M
EIP_OLCS_144	-23.713880	-97.272497	1.000	Art. 76.4(a)(ii): FOS + 60 M
EIP_OLCS_145	-23.720092	-97.255635	1.000	Art. 76.4(a)(ii): FOS + 60 M

Outer limit of the continental shelf fixed point	Latitude [decimal degrees]	Longitude [decimal degrees]	Distance to next point [M]	Article 76 provision invoked
EIP_OLCS_146	-23.726559	-97.238886	1.000	Art. 76.4(a)(ii): FOS + 60 M
EIP_OLCS_147	-23.733280	-97.222254	1.000	Art. 76.4(a)(ii): FOS + 60 M
EIP_OLCS_148	-23.740254	-97.205745	1.000	Art. 76.4(a)(ii): FOS + 60 M
EIP_OLCS_149	-23.747479	-97.189363	1.000	Art. 76.4(a)(ii): FOS + 60 M
EIP_OLCS_150	-23.754952	-97.173111	1.000	Art. 76.4(a)(ii): FOS + 60 M
EIP_OLCS_151	-23.762672	-97.156996	1.000	Art. 76.4(a)(ii): FOS + 60 M
EIP_OLCS_152	-23.770636	-97.141020	1.000	Art. 76.4(a)(ii): FOS + 60 M
EIP_OLCS_153	-23.778842	-97.125189	1.000	Art. 76.4(a)(ii): FOS + 60 M
EIP_OLCS_154	-23.787289	-97.109507	1.000	Art. 76.4(a)(ii): FOS + 60 M
EIP_OLCS_155	-23.795973	-97.093978	1.000	Art. 76.4(a)(ii): FOS + 60 M
EIP_OLCS_156	-23.804892	-97.078606	1.000	Art. 76.4(a)(ii): FOS + 60 M
EIP_OLCS_157	-23.814045	-97.063395	1.000	Art. 76.4(a)(ii): FOS + 60 M
EIP_OLCS_158	-23.823428	-97.048351	1.000	Art. 76.4(a)(ii): FOS + 60 M
EIP_OLCS_159	-23.833038	-97.033476	1.000	Art. 76.4(a)(ii): FOS + 60 M
EIP_OLCS_160	-23.842875	-97.018775	1.000	Art. 76.4(a)(ii): FOS + 60 M
EIP_OLCS_161	-23.852933	-97.004252	1.000	Art. 76.4(a)(ii): FOS + 60 M
EIP_OLCS_162	-23.863212	-96.989912	1.000	Art. 76.4(a)(ii): FOS + 60 M
EIP_OLCS_163	-23.873707	-96.975757	23.100	Art. 76.4(a)(ii): FOS + 60 M
EIP_OLCS_164	-24.120976	-96.652765	1.000	Art. 76.4(a)(ii): FOS + 60 M
EIP_OLCS_165	-24.131891	-96.638963	1.000	Art. 76.4(a)(ii): FOS + 60 M
EIP_OLCS_166	-24.143014	-96.625358	1.000	Art. 76.4(a)(ii): FOS + 60 M
EIP_OLCS_167	-24.154342	-96.611956	1.000	Art. 76.4(a)(ii): FOS + 60 M
EIP_OLCS_168	-24.165873	-96.598758	1.000	Art. 76.4(a)(ii): FOS + 60 M
EIP_OLCS_169	-24.177603	-96.585769	1.000	Art. 76.4(a)(ii): FOS + 60 M
EIP_OLCS_170	-24.189528	-96.572993	1.000	Art. 76.4(a)(ii): FOS + 60 M
EIP_OLCS_171	-24.201646	-96.560433	1.000	Art. 76.4(a)(ii): FOS + 60 M
EIP_OLCS_172	-24.213954	-96.548093	1.000	Art. 76.4(a)(ii): FOS + 60 M
EIP_OLCS_173	-24.226447	-96.535975	1.000	Art. 76.4(a)(ii): FOS + 60 M
EIP_OLCS_174	-24.239123	-96.524084	1.000	Art. 76.4(a)(ii): FOS + 60 M
EIP_OLCS_175	-24.251978	-96.512422	1.000	Art. 76.4(a)(ii): FOS + 60 M
EIP_OLCS_176	-24.265008	-96.500994	1.000	Art. 76.4(a)(ii): FOS + 60 M
EIP_OLCS_177	-24.278210	-96.489801	1.000	Art. 76.4(a)(ii): FOS + 60 M
EIP_OLCS_178	-24.291581	-96.478848	1.000	Art. 76.4(a)(ii): FOS + 60 M
EIP_OLCS_179	-24.305116	-96.468137	1.000	Art. 76.4(a)(ii): FOS + 60 M
EIP_OLCS_180	-24.318812	-96.457671	1.000	Art. 76.4(a)(ii): FOS + 60 M
EIP_OLCS_181	-24.332666	-96.447454	1.000	Art. 76.4(a)(ii): FOS + 60 M
EIP_OLCS_182	-24.346673	-96.437487	1.000	Art. 76.4(a)(ii): FOS + 60 M

Outer limit of the continental shelf fixed point	Latitude [decimal degrees]	Longitude [decimal degrees]	Distance to next point [M]	Article 76 provision invoked
EIP_OLCS_183	-24.360829	-96.427775	1.000	Art. 76.4(a)(ii): FOS + 60 M
EIP_OLCS_184	-24.375131	-96.418320	1.000	Art. 76.4(a)(ii): FOS + 60 M
EIP_OLCS_185	-24.389575	-96.409124	1.000	Art. 76.4(a)(ii): FOS + 60 M
EIP_OLCS_186	-24.404157	-96.400190	1.000	Art. 76.4(a)(ii): FOS + 60 M
EIP_OLCS_187	-24.418872	-96.391520	1.000	Art. 76.4(a)(ii): FOS + 60 M
EIP_OLCS_188	-24.433717	-96.383118	1.000	Art. 76.4(a)(ii): FOS + 60 M
EIP_OLCS_189	-24.448688	-96.374984	1.000	Art. 76.4(a)(ii): FOS + 60 M
EIP_OLCS_190	-24.463780	-96.367123	1.000	Art. 76.4(a)(ii): FOS + 60 M
EIP_OLCS_191	-24.478990	-96.359536	1.000	Art. 76.4(a)(ii): FOS + 60 M
EIP_OLCS_192	-24.494313	-96.352225	1.000	Art. 76.4(a)(ii): FOS + 60 M
EIP_OLCS_193	-24.509745	-96.345192	1.000	Art. 76.4(a)(ii): FOS + 60 M
EIP_OLCS_194	-24.525282	-96.338440	1.000	Art. 76.4(a)(ii): FOS + 60 M
EIP_OLCS_195	-24.540919	-96.331969	1.000	Art. 76.4(a)(ii): FOS + 60 M
EIP_OLCS_196	-24.556653	-96.325784	1.000	Art. 76.4(a)(ii): FOS + 60 M
EIP_OLCS_197	-24.572478	-96.319884	1.000	Art. 76.4(a)(ii): FOS + 60 M
EIP_OLCS_198	-24.588391	-96.314271	1.000	Art. 76.4(a)(ii): FOS + 60 M
EIP_OLCS_199	-24.604387	-96.308949	1.000	Art. 76.4(a)(ii): FOS + 60 M
EIP_OLCS_200	-24.620461	-96.303917	1.000	Art. 76.4(a)(ii): FOS + 60 M
EIP_OLCS_201	-24.636610	-96.299178	1.000	Art. 76.4(a)(ii): FOS + 60 M
EIP_OLCS_202	-24.652828	-96.294732	1.000	Art. 76.4(a)(ii): FOS + 60 M
EIP_OLCS_203	-24.669112	-96.290582	1.000	Art. 76.4(a)(ii): FOS + 60 M
EIP_OLCS_204	-24.685457	-96.286728	1.000	Art. 76.4(a)(ii): FOS + 60 M
EIP_OLCS_205	-24.701858	-96.283172	1.000	Art. 76.4(a)(ii): FOS + 60 M
EIP_OLCS_206	-24.718310	-96.279915	1.000	Art. 76.4(a)(ii): FOS + 60 M
EIP_OLCS_207	-24.734810	-96.276957	1.000	Art. 76.4(a)(ii): FOS + 60 M
EIP_OLCS_208	-24.751353	-96.274301	1.000	Art. 76.4(a)(ii): FOS + 60 M
EIP_OLCS_209	-24.767933	-96.271946	1.000	Art. 76.4(a)(ii): FOS + 60 M
EIP_OLCS_210	-24.784547	-96.269893	1.000	Art. 76.4(a)(ii): FOS + 60 M
EIP_OLCS_211	-24.801190	-96.268143	1.000	Art. 76.4(a)(ii): FOS + 60 M
EIP_OLCS_212	-24.817857	-96.266697	1.000	Art. 76.4(a)(ii): FOS + 60 M
EIP_OLCS_213	-24.834544	-96.265555	1.000	Art. 76.4(a)(ii): FOS + 60 M
EIP_OLCS_214	-24.851246	-96.264718	1.000	Art. 76.4(a)(ii): FOS + 60 M
EIP_OLCS_215	-24.867958	-96.264185	1.000	Art. 76.4(a)(ii): FOS + 60 M
EIP_OLCS_216	-24.884676	-96.263958	1.000	Art. 76.4(a)(ii): FOS + 60 M
EIP_OLCS_217	-24.901395	-96.264037	1.000	Art. 76.4(a)(ii): FOS + 60 M
EIP_OLCS_218	-24.918110	-96.264420	1.000	Art. 76.4(a)(ii): FOS + 60 M
EIP_OLCS_219	-24.934817	-96.265110	1.000	Art. 76.4(a)(ii): FOS + 60 M

Outer limit of the continental shelf fixed point	Latitude [decimal degrees]	Longitude [decimal degrees]	Distance to next point [M]	Article 76 provision invoked
EIP_OLCS_220	-24.951512	-96.266105	1.000	Art. 76.4(a)(ii): FOS + 60 M
EIP_OLCS_221	-24.968189	-96.267405	1.000	Art. 76.4(a)(ii): FOS + 60 M
EIP_OLCS_222	-24.984844	-96.269010	1.000	Art. 76.4(a)(ii): FOS + 60 M
EIP_OLCS_223	-25.001472	-96.270920	1.000	Art. 76.4(a)(ii): FOS + 60 M
EIP_OLCS_224	-25.018068	-96.273134	1.000	Art. 76.4(a)(ii): FOS + 60 M
EIP_OLCS_225	-25.034629	-96.275653	1.000	Art. 76.4(a)(ii): FOS + 60 M
EIP_OLCS_226	-25.051149	-96.278474	1.000	Art. 76.4(a)(ii): FOS + 60 M
EIP_OLCS_227	-25.067624	-96.281598	1.000	Art. 76.4(a)(ii): FOS + 60 M
EIP_OLCS_228	-25.084049	-96.285024	1.000	Art. 76.4(a)(ii): FOS + 60 M
EIP_OLCS_229	-25.100419	-96.288751	1.000	Art. 76.4(a)(ii): FOS + 60 M
EIP_OLCS_230	-25.116731	-96.292778	1.000	Art. 76.4(a)(ii): FOS + 60 M
EIP_OLCS_231	-25.132979	-96.297105	1.000	Art. 76.4(a)(ii): FOS + 60 M
EIP_OLCS_232	-25.149159	-96.301729	1.000	Art. 76.4(a)(ii): FOS + 60 M
EIP_OLCS_233	-25.165266	-96.306650	1.000	Art. 76.4(a)(ii): FOS + 60 M
EIP_OLCS_234	-25.181297	-96.311867	1.000	Art. 76.4(a)(ii): FOS + 60 M
EIP_OLCS_235	-25.197245	-96.317377	1.000	Art. 76.4(a)(ii): FOS + 60 M
EIP_OLCS_236	-25.213108	-96.323181	1.000	Art. 76.4(a)(ii): FOS + 60 M
EIP_OLCS_237	-25.228880	-96.329276	1.000	Art. 76.4(a)(ii): FOS + 60 M
EIP_OLCS_238	-25.244558	-96.335661	1.000	Art. 76.4(a)(ii): FOS + 60 M
EIP_OLCS_239	-25.260136	-96.342334	1.000	Art. 76.4(a)(ii): FOS + 60 M
EIP_OLCS_240	-25.275610	-96.349293	1.000	Art. 76.4(a)(ii): FOS + 60 M
EIP_OLCS_241	-25.290977	-96.356536	1.000	Art. 76.4(a)(ii): FOS + 60 M
EIP_OLCS_242	-25.306231	-96.364062	1.000	Art. 76.4(a)(ii): FOS + 60 M
EIP_OLCS_243	-25.321369	-96.371869	1.000	Art. 76.4(a)(ii): FOS + 60 M
EIP_OLCS_244	-25.336385	-96.379954	1.000	Art. 76.4(a)(ii): FOS + 60 M
EIP_OLCS_245	-25.351277	-96.388315	1.000	Art. 76.4(a)(ii): FOS + 60 M
EIP_OLCS_246	-25.366040	-96.396950	1.000	Art. 76.4(a)(ii): FOS + 60 M
EIP_OLCS_247	-25.380669	-96.405857	1.000	Art. 76.4(a)(ii): FOS + 60 M
EIP_OLCS_248	-25.395161	-96.415033	1.000	Art. 76.4(a)(ii): FOS + 60 M
EIP_OLCS_249	-25.409511	-96.424476	1.000	Art. 76.4(a)(ii): FOS + 60 M
EIP_OLCS_250	-25.423715	-96.434183	1.000	Art. 76.4(a)(ii): FOS + 60 M
EIP_OLCS_251	-25.437770	-96.444152	1.000	Art. 76.4(a)(ii): FOS + 60 M
EIP_OLCS_252	-25.451672	-96.454380	1.000	Art. 76.4(a)(ii): FOS + 60 M
EIP_OLCS_253	-25.465416	-96.464864	1.000	Art. 76.4(a)(ii): FOS + 60 M
EIP_OLCS_254	-25.478999	-96.475601	1.000	Art. 76.4(a)(ii): FOS + 60 M
EIP_OLCS_255	-25.492416	-96.486588	1.000	Art. 76.4(a)(ii): FOS + 60 M
EIP_OLCS_256	-25.505665	-96.497823	1.000	Art. 76.4(a)(ii): FOS + 60 M

Outer limit of the continental shelf fixed point	Latitude [decimal degrees]	Longitude [decimal degrees]	Distance to next point [M]	Article 76 provision invoked
EIP_OLCS_257	-25.518741	-96.509301	1.000	Art. 76.4(a)(ii): FOS + 60 M
EIP_OLCS_258	-25.531641	-96.521021	1.000	Art. 76.4(a)(ii): FOS + 60 M
EIP_OLCS_259	-25.544360	-96.532979	1.000	Art. 76.4(a)(ii): FOS + 60 M
EIP_OLCS_260	-25.556896	-96.545171	1.000	Art. 76.4(a)(ii): FOS + 60 M
EIP_OLCS_261	-25.569245	-96.557594	1.000	Art. 76.4(a)(ii): FOS + 60 M
EIP_OLCS_262	-25.581404	-96.570245	1.000	Art. 76.4(a)(ii): FOS + 60 M
EIP_OLCS_263	-25.593368	-96.583120	1.000	Art. 76.4(a)(ii): FOS + 60 M
EIP_OLCS_264	-25.605135	-96.596216	1.000	Art. 76.4(a)(ii): FOS + 60 M
EIP_OLCS_265	-25.616701	-96.609529	1.000	Art. 76.4(a)(ii): FOS + 60 M
EIP_OLCS_266	-25.628063	-96.623055	1.000	Art. 76.4(a)(ii): FOS + 60 M
EIP_OLCS_267	-25.639218	-96.636790	1.000	Art. 76.4(a)(ii): FOS + 60 M
EIP_OLCS_268	-25.650163	-96.650732	1.000	Art. 76.4(a)(ii): FOS + 60 M
EIP_OLCS_269	-25.660894	-96.664875	1.000	Art. 76.4(a)(ii): FOS + 60 M
EIP_OLCS_270	-25.671408	-96.679216	1.000	Art. 76.4(a)(ii): FOS + 60 M
EIP_OLCS_271	-25.681703	-96.693751	1.000	Art. 76.4(a)(ii): FOS + 60 M
EIP_OLCS_272	-25.691776	-96.708475	1.000	Art. 76.4(a)(ii): FOS + 60 M
EIP_OLCS_273	-25.701623	-96.723385	1.000	Art. 76.4(a)(ii): FOS + 60 M
EIP_OLCS_274	-25.711242	-96.738477	1.000	Art. 76.4(a)(ii): FOS + 60 M
EIP_OLCS_275	-25.720631	-96.753746	1.000	Art. 76.4(a)(ii): FOS + 60 M
EIP_OLCS_276	-25.729786	-96.769188	1.000	Art. 76.4(a)(ii): FOS + 60 M
EIP_OLCS_277	-25.738705	-96.784799	1.000	Art. 76.4(a)(ii): FOS + 60 M
EIP_OLCS_278	-25.747386	-96.800574	1.000	Art. 76.4(a)(ii): FOS + 60 M
EIP_OLCS_279	-25.755825	-96.816508	1.000	Art. 76.4(a)(ii): FOS + 60 M
EIP_OLCS_280	-25.764021	-96.832598	1.000	Art. 76.4(a)(ii): FOS + 60 M
EIP_OLCS_281	-25.771971	-96.848839	1.000	Art. 76.4(a)(ii): FOS + 60 M
EIP_OLCS_282	-25.779674	-96.865226	1.000	Art. 76.4(a)(ii): FOS + 60 M
EIP_OLCS_283	-25.787126	-96.881754	1.000	Art. 76.4(a)(ii): FOS + 60 M
EIP_OLCS_284	-25.794325	-96.898419	1.000	Art. 76.4(a)(ii): FOS + 60 M
EIP_OLCS_285	-25.801271	-96.915217	1.000	Art. 76.4(a)(ii): FOS + 60 M
EIP_OLCS_286	-25.807960	-96.932142	1.000	Art. 76.4(a)(ii): FOS + 60 M
EIP_OLCS_287	-25.814391	-96.949189	1.000	Art. 76.4(a)(ii): FOS + 60 M
EIP_OLCS_288	-25.820561	-96.966355	1.000	Art. 76.4(a)(ii): FOS + 60 M
EIP_OLCS_289	-25.826470	-96.983633	59.312	Art. 76.4(a)(ii): FOS + 60 M
EIP_OLCS_290	-26.607392	-97.660901	1.000	Art. 76.4(a)(ii): FOS + 60 M
EIP_OLCS_291	-26.624017	-97.662839	1.000	Art. 76.4(a)(ii): FOS + 60 M
EIP_OLCS_292	-26.640609	-97.665086	1.000	Art. 76.4(a)(ii): FOS + 60 M
EIP_OLCS_293	-26.657166	-97.667640	1.000	Art. 76.4(a)(ii): FOS + 60 M

Outer limit of the continental shelf fixed point	Latitude [decimal degrees]	Longitude [decimal degrees]	Distance to next point [M]	Article 76 provision invoked
EIP_OLCS_294	-26.673682	-97.670503	1.000	Art. 76.4(a)(ii): FOS + 60 M
EIP_OLCS_295	-26.690153	-97.673672	1.000	Art. 76.4(a)(ii): FOS + 60 M
EIP_OLCS_296	-26.706574	-97.677147	1.000	Art. 76.4(a)(ii): FOS + 60 M
EIP_OLCS_297	-26.722940	-97.680928	1.000	Art. 76.4(a)(ii): FOS + 60 M
EIP_OLCS_298	-26.739248	-97.685012	1.000	Art. 76.4(a)(ii): FOS + 60 M
EIP_OLCS_299	-26.755492	-97.689400	1.000	Art. 76.4(a)(ii): FOS + 60 M
EIP_OLCS_300	-26.771668	-97.694091	1.000	Art. 76.4(a)(ii): FOS + 60 M
EIP_OLCS_301	-26.787771	-97.699082	1.000	Art. 76.4(a)(ii): FOS + 60 M
EIP_OLCS_302	-26.803797	-97.704373	1.000	Art. 76.4(a)(ii): FOS + 60 M
EIP_OLCS_303	-26.819742	-97.709963	1.000	Art. 76.4(a)(ii): FOS + 60 M
EIP_OLCS_304	-26.835600	-97.715849	1.000	Art. 76.4(a)(ii): FOS + 60 M
EIP_OLCS_305	-26.851368	-97.722031	1.000	Art. 76.4(a)(ii): FOS + 60 M
EIP_OLCS_306	-26.867041	-97.728507	1.000	Art. 76.4(a)(ii): FOS + 60 M
EIP_OLCS_307	-26.882615	-97.735274	1.000	Art. 76.4(a)(ii): FOS + 60 M
EIP_OLCS_308	-26.898085	-97.742333	1.000	Art. 76.4(a)(ii): FOS + 60 M
EIP_OLCS_309	-26.913447	-97.749679	1.000	Art. 76.4(a)(ii): FOS + 60 M
EIP_OLCS_310	-26.928696	-97.757313	1.000	Art. 76.4(a)(ii): FOS + 60 M
EIP_OLCS_311	-26.943829	-97.765231	1.000	Art. 76.4(a)(ii): FOS + 60 M
EIP_OLCS_312	-26.958842	-97.773431	1.000	Art. 76.4(a)(ii): FOS + 60 M
EIP_OLCS_313	-26.973729	-97.781911	1.000	Art. 76.4(a)(ii): FOS + 60 M
EIP_OLCS_314	-26.988487	-97.790670	1.000	Art. 76.4(a)(ii): FOS + 60 M
EIP_OLCS_315	-27.003111	-97.799704	1.000	Art. 76.4(a)(ii): FOS + 60 M
EIP_OLCS_316	-27.017598	-97.809011	1.000	Art. 76.4(a)(ii): FOS + 60 M
EIP_OLCS_317	-27.031943	-97.818589	1.000	Art. 76.4(a)(ii): FOS + 60 M
EIP_OLCS_318	-27.046143	-97.828435	1.000	Art. 76.4(a)(ii): FOS + 60 M
EIP_OLCS_319	-27.060193	-97.838546	1.000	Art. 76.4(a)(ii): FOS + 60 M
EIP_OLCS_320	-27.074089	-97.848920	1.000	Art. 76.4(a)(ii): FOS + 60 M
EIP_OLCS_321	-27.087828	-97.859554	1.000	Art. 76.4(a)(ii): FOS + 60 M
EIP_OLCS_322	-27.101406	-97.870445	1.000	Art. 76.4(a)(ii): FOS + 60 M
EIP_OLCS_323	-27.114818	-97.881589	1.000	Art. 76.4(a)(ii): FOS + 60 M
EIP_OLCS_324	-27.128062	-97.892985	1.000	Art. 76.4(a)(ii): FOS + 60 M
EIP_OLCS_325	-27.141132	-97.904628	1.000	Art. 76.4(a)(ii): FOS + 60 M
EIP_OLCS_326	-27.154026	-97.916516	1.000	Art. 76.4(a)(ii): FOS + 60 M
EIP_OLCS_327	-27.166740	-97.928645	1.000	Art. 76.4(a)(ii): FOS + 60 M
EIP_OLCS_328	-27.179271	-97.941012	1.000	Art. 76.4(a)(ii): FOS + 60 M
EIP_OLCS_329	-27.191614	-97.953614	1.000	Art. 76.4(a)(ii): FOS + 60 M
EIP_OLCS_330	-27.203766	-97.966446	1.000	Art. 76.4(a)(ii): FOS + 60 M

Outer limit of the continental shelf fixed point	Latitude [decimal degrees]	Longitude [decimal degrees]	Distance to next point [M]	Article 76 provision invoked
EIP_OLCS_331	-27.215725	-97.979507	1.000	Art. 76.4(a)(ii): FOS + 60 M
EIP_OLCS_332	-27.227486	-97.992791	1.000	Art. 76.4(a)(ii): FOS + 60 M
EIP_OLCS_333	-27.239046	-98.006295	1.000	Art. 76.4(a)(ii): FOS + 60 M
EIP_OLCS_334	-27.250401	-98.020015	1.000	Art. 76.4(a)(ii): FOS + 60 M
EIP_OLCS_335	-27.261550	-98.033949	1.000	Art. 76.4(a)(ii): FOS + 60 M
EIP_OLCS_336	-27.272488	-98.048090	1.000	Art. 76.4(a)(ii): FOS + 60 M
EIP_OLCS_337	-27.283213	-98.062437	1.000	Art. 76.4(a)(ii): FOS + 60 M
EIP_OLCS_338	-27.293720	-98.076985	1.000	Art. 76.4(a)(ii): FOS + 60 M
EIP_OLCS_339	-27.304009	-98.091729	1.000	Art. 76.4(a)(ii): FOS + 60 M
EIP_OLCS_340	-27.314074	-98.106665	1.000	Art. 76.4(a)(ii): FOS + 60 M
EIP_OLCS_341	-27.323915	-98.121791	1.000	Art. 76.4(a)(ii): FOS + 60 M
EIP_OLCS_342	-27.333527	-98.137100	1.000	Art. 76.4(a)(ii): FOS + 60 M
EIP_OLCS_343	-27.342908	-98.152589	1.000	Art. 76.4(a)(ii): FOS + 60 M
EIP_OLCS_344	-27.352056	-98.168253	1.000	Art. 76.4(a)(ii): FOS + 60 M
EIP_OLCS_345	-27.360967	-98.184089	1.000	Art. 76.4(a)(ii): FOS + 60 M
EIP_OLCS_346	-27.369640	-98.200091	1.000	Art. 76.4(a)(ii): FOS + 60 M
EIP_OLCS_347	-27.378072	-98.216256	1.000	Art. 76.4(a)(ii): FOS + 60 M
EIP_OLCS_348	-27.386260	-98.232578	1.000	Art. 76.4(a)(ii): FOS + 60 M
EIP_OLCS_349	-27.394202	-98.249053	1.000	Art. 76.4(a)(ii): FOS + 60 M
EIP_OLCS_350	-27.401896	-98.265676	1.000	Art. 76.4(a)(ii): FOS + 60 M
EIP_OLCS_351	-27.409340	-98.282443	1.000	Art. 76.4(a)(ii): FOS + 60 M
EIP_OLCS_352	-27.416531	-98.299348	1.000	Art. 76.4(a)(ii): FOS + 60 M
EIP_OLCS_353	-27.423468	-98.316388	1.000	Art. 76.4(a)(ii): FOS + 60 M
EIP_OLCS_354	-27.430148	-98.333557	1.000	Art. 76.4(a)(ii): FOS + 60 M
EIP_OLCS_355	-27.436570	-98.350850	1.000	Art. 76.4(a)(ii): FOS + 60 M
EIP_OLCS_356	-27.442732	-98.368263	1.000	Art. 76.4(a)(ii): FOS + 60 M
EIP_OLCS_357	-27.448632	-98.385791	1.000	Art. 76.4(a)(ii): FOS + 60 M
EIP_OLCS_358	-27.454268	-98.403428	1.000	Art. 76.4(a)(ii): FOS + 60 M
EIP_OLCS_359	-27.459639	-98.421169	1.000	Art. 76.4(a)(ii): FOS + 60 M
EIP_OLCS_360	-27.464743	-98.439010	1.000	Art. 76.4(a)(ii): FOS + 60 M
EIP_OLCS_361	-27.469579	-98.456946	1.000	Art. 76.4(a)(ii): FOS + 60 M
EIP_OLCS_362	-27.474145	-98.474971	1.000	Art. 76.4(a)(ii): FOS + 60 M
EIP_OLCS_363	-27.478440	-98.493080	1.000	Art. 76.4(a)(ii): FOS + 60 M
EIP_OLCS_364	-27.482464	-98.511268	1.000	Art. 76.4(a)(ii): FOS + 60 M
EIP_OLCS_365	-27.486214	-98.529531	1.000	Art. 76.4(a)(ii): FOS + 60 M
EIP_OLCS_366	-27.489689	-98.547862	1.000	Art. 76.4(a)(ii): FOS + 60 M
EIP_OLCS_367	-27.492890	-98.566256	59.575	Art. 76.4(a)(ii): FOS + 60 M

Outer limit of the continental shelf fixed point	Latitude [decimal degrees]	Longitude [decimal degrees]	Distance to next point [M]	Article 76 provision invoked
EIP_OLCS_368	-28.011179	-99.521837	1.000	Art. 76.4(a)(ii): FOS + 60 M
EIP_OLCS_369	-28.024109	-99.533768	13.111	Art. 76.4(a)(ii): FOS + 60 M
EIP_OLCS_370	-28.193513	-99.690489	1.000	Art. 76.4(a)(ii): FOS + 60 M
EIP_OLCS_371	-28.206429	-99.702459	1.000	Art. 76.4(a)(ii): FOS + 60 M
EIP_OLCS_372	-28.219165	-99.714673	1.000	Art. 76.4(a)(ii): FOS + 60 M
EIP_OLCS_373	-28.231718	-99.727128	1.000	Art. 76.4(a)(ii): FOS + 60 M
EIP_OLCS_374	-28.244084	-99.739820	1.000	Art. 76.4(a)(ii): FOS + 60 M
EIP_OLCS_375	-28.256260	-99.752746	1.000	Art. 76.4(a)(ii): FOS + 60 M
EIP_OLCS_376	-28.268242	-99.765903	1.000	Art. 76.4(a)(ii): FOS + 60 M
EIP_OLCS_377	-28.280027	-99.779286	1.000	Art. 76.4(a)(ii): FOS + 60 M
EIP_OLCS_378	-28.291612	-99.792892	1.000	Art. 76.4(a)(ii): FOS + 60 M
EIP_OLCS_379	-28.302993	-99.806717	1.000	Art. 76.4(a)(ii): FOS + 60 M
EIP_OLCS_380	-28.314167	-99.820757	1.000	Art. 76.4(a)(ii): FOS + 60 M
EIP_OLCS_381	-28.325131	-99.835009	1.000	Art. 76.4(a)(ii): FOS + 60 M
EIP_OLCS_382	-28.335882	-99.849468	1.000	Art. 76.4(a)(ii): FOS + 60 M
EIP_OLCS_383	-28.346416	-99.864131	1.000	Art. 76.4(a)(ii): FOS + 60 M
EIP_OLCS_384	-28.356731	-99.878993	1.000	Art. 76.4(a)(ii): FOS + 60 M
EIP_OLCS_385	-28.366824	-99.894050	1.000	Art. 76.4(a)(ii): FOS + 60 M
EIP_OLCS_386	-28.376692	-99.909297	1.000	Art. 76.4(a)(ii): FOS + 60 M
EIP_OLCS_387	-28.386332	-99.924732	59.427	Art. 76.4(a)(ii): FOS + 60 M
EIP_OLCS_388	-29.247793	-100.485600	1.000	Art. 76.4(a)(ii): FOS + 60 M
EIP_OLCS_389	-29.264432	-100.487348	1.000	Art. 76.4(a)(ii): FOS + 60 M
EIP_OLCS_390	-29.281042	-100.489413	1.000	Art. 76.4(a)(ii): FOS + 60 M
EIP_OLCS_391	-29.297620	-100.491793	1.000	Art. 76.4(a)(ii): FOS + 60 M
EIP_OLCS_392	-29.314161	-100.494490	1.000	Art. 76.4(a)(ii): FOS + 60 M
EIP_OLCS_393	-29.330660	-100.497501	1.000	Art. 76.4(a)(ii): FOS + 60 M
EIP_OLCS_394	-29.347112	-100.500827	1.000	Art. 76.4(a)(ii): FOS + 60 M
EIP_OLCS_395	-29.363514	-100.504466	1.000	Art. 76.4(a)(ii): FOS + 60 M
EIP_OLCS_396	-29.379860	-100.508418	1.000	Art. 76.4(a)(ii): FOS + 60 M
EIP_OLCS_397	-29.396145	-100.512682	1.000	Art. 76.4(a)(ii): FOS + 60 M
EIP_OLCS_398	-29.412367	-100.517256	1.000	Art. 76.4(a)(ii): FOS + 60 M
EIP_OLCS_399	-29.428519	-100.522140	1.000	Art. 76.4(a)(ii): FOS + 60 M
EIP_OLCS_400	-29.444597	-100.527333	1.000	Art. 76.4(a)(ii): FOS + 60 M
EIP_OLCS_401	-29.460597	-100.532832	1.000	Art. 76.4(a)(ii): FOS + 60 M
EIP_OLCS_402	-29.476514	-100.538637	1.000	Art. 76.4(a)(ii): FOS + 60 M
EIP_OLCS_403	-29.492344	-100.544747	1.000	Art. 76.4(a)(ii): FOS + 60 M
EIP_OLCS_404	-29.508083	-100.551159	1.000	Art. 76.4(a)(ii): FOS + 60 M

Outer limit of the continental shelf fixed point	Latitude [decimal degrees]	Longitude [decimal degrees]	Distance to next point [M]	Article 76 provision invoked
EIP_OLCS_405	-29.523725	-100.557872	1.000	Art. 76.4(a)(ii): FOS + 60 M
EIP_OLCS_406	-29.539267	-100.564884	1.000	Art. 76.4(a)(ii): FOS + 60 M
EIP_OLCS_407	-29.554704	-100.572193	1.000	Art. 76.4(a)(ii): FOS + 60 M
EIP_OLCS_408	-29.570032	-100.579798	1.000	Art. 76.4(a)(ii): FOS + 60 M
EIP_OLCS_409	-29.585247	-100.587697	1.000	Art. 76.4(a)(ii): FOS + 60 M
EIP_OLCS_410	-29.600344	-100.595887	1.000	Art. 76.4(a)(ii): FOS + 60 M
EIP_OLCS_411	-29.615319	-100.604366	1.000	Art. 76.4(a)(ii): FOS + 60 M
EIP_OLCS_412	-29.630168	-100.613132	1.000	Art. 76.4(a)(ii): FOS + 60 M
EIP_OLCS_413	-29.644887	-100.622183	1.000	Art. 76.4(a)(ii): FOS + 60 M
EIP_OLCS_414	-29.659471	-100.631515	1.000	Art. 76.4(a)(ii): FOS + 60 M
EIP_OLCS_415	-29.673916	-100.641128	1.000	Art. 76.4(a)(ii): FOS + 60 M
EIP_OLCS_416	-29.688219	-100.651017	1.000	Art. 76.4(a)(ii): FOS + 60 M
EIP_OLCS_417	-29.702375	-100.661181	1.000	Art. 76.4(a)(ii): FOS + 60 M
EIP_OLCS_418	-29.716381	-100.671617	1.000	Art. 76.4(a)(ii): FOS + 60 M
EIP_OLCS_419	-29.730231	-100.682322	1.000	Art. 76.4(a)(ii): FOS + 60 M
EIP_OLCS_420	-29.743924	-100.693292	1.000	Art. 76.4(a)(ii): FOS + 60 M
EIP_OLCS_421	-29.757454	-100.704526	1.000	Art. 76.4(a)(ii): FOS + 60 M
EIP_OLCS_422	-29.770817	-100.716019	1.000	Art. 76.4(a)(ii): FOS + 60 M
EIP_OLCS_423	-29.784011	-100.727769	1.000	Art. 76.4(a)(ii): FOS + 60 M
EIP_OLCS_424	-29.797031	-100.739772	1.000	Art. 76.4(a)(ii): FOS + 60 M
EIP_OLCS_425	-29.809873	-100.752026	1.000	Art. 76.4(a)(ii): FOS + 60 M
EIP_OLCS_426	-29.822534	-100.764526	1.000	Art. 76.4(a)(ii): FOS + 60 M
EIP_OLCS_427	-29.835011	-100.777270	1.000	Art. 76.4(a)(ii): FOS + 60 M
EIP_OLCS_428	-29.847299	-100.790254	1.000	Art. 76.4(a)(ii): FOS + 60 M
EIP_OLCS_429	-29.859396	-100.803474	1.000	Art. 76.4(a)(ii): FOS + 60 M
EIP_OLCS_430	-29.871298	-100.816927	1.000	Art. 76.4(a)(ii): FOS + 60 M
EIP_OLCS_431	-29.883001	-100.830608	1.000	Art. 76.4(a)(ii): FOS + 60 M
EIP_OLCS_432	-29.894503	-100.844515	1.000	Art. 76.4(a)(ii): FOS + 60 M
EIP_OLCS_433	-29.905799	-100.858643	1.000	Art. 76.4(a)(ii): FOS + 60 M
EIP_OLCS_434	-29.916887	-100.872988	1.000	Art. 76.4(a)(ii): FOS + 60 M
EIP_OLCS_435	-29.927764	-100.887546	1.000	Art. 76.4(a)(ii): FOS + 60 M
EIP_OLCS_436	-29.938426	-100.902314	1.000	Art. 76.4(a)(ii): FOS + 60 M
EIP_OLCS_437	-29.948871	-100.917286	1.000	Art. 76.4(a)(ii): FOS + 60 M
EIP_OLCS_438	-29.959095	-100.932460	1.000	Art. 76.4(a)(ii): FOS + 60 M
EIP_OLCS_439	-29.969096	-100.947830	1.000	Art. 76.4(a)(ii): FOS + 60 M
EIP_OLCS_440	-29.978870	-100.963392	1.000	Art. 76.4(a)(ii): FOS + 60 M
EIP_OLCS_441	-29.988416	-100.979143	1.000	Art. 76.4(a)(ii): FOS + 60 M

Outer limit of the continental shelf fixed point	Latitude [decimal degrees]	Longitude [decimal degrees]	Distance to next point [M]	Article 76 provision invoked
EIP_OLCS_442	-29.997730	-100.995077	1.000	Art. 76.4(a)(ii): FOS + 60 M
EIP_OLCS_443	-30.006809	-101.011190	1.000	Art. 76.4(a)(ii): FOS + 60 M
EIP_OLCS_444	-30.015651	-101.027477	1.000	Art. 76.4(a)(ii): FOS + 60 M
EIP_OLCS_445	-30.024254	-101.043935	1.000	Art. 76.4(a)(ii): FOS + 60 M
EIP_OLCS_446	-30.032615	-101.060557	1.000	Art. 76.4(a)(ii): FOS + 60 M
EIP_OLCS_447	-30.040732	-101.077341	1.000	Art. 76.4(a)(ii): FOS + 60 M
EIP_OLCS_448	-30.048601	-101.094280	1.000	Art. 76.4(a)(ii): FOS + 60 M
EIP_OLCS_449	-30.056222	-101.111370	1.000	Art. 76.4(a)(ii): FOS + 60 M
EIP_OLCS_450	-30.063592	-101.128606	1.000	Art. 76.4(a)(ii): FOS + 60 M
EIP_OLCS_451	-30.070709	-101.145983	1.000	Art. 76.4(a)(ii): FOS + 60 M
EIP_OLCS_452	-30.077571	-101.163497	1.000	Art. 76.4(a)(ii): FOS + 60 M
EIP_OLCS_453	-30.084175	-101.181143	1.000	Art. 76.4(a)(ii): FOS + 60 M
EIP_OLCS_454	-30.090520	-101.198914	1.000	Art. 76.4(a)(ii): FOS + 60 M
EIP_OLCS_455	-30.096605	-101.216807	1.000	Art. 76.4(a)(ii): FOS + 60 M
EIP_OLCS_456	-30.102427	-101.234817	1.000	Art. 76.4(a)(ii): FOS + 60 M
EIP_OLCS_457	-30.107984	-101.252937	1.000	Art. 76.4(a)(ii): FOS + 60 M
EIP_OLCS_458	-30.113276	-101.271163	1.000	Art. 76.4(a)(ii): FOS + 60 M
EIP_OLCS_459	-30.118301	-101.289490	1.000	Art. 76.4(a)(ii): FOS + 60 M
EIP_OLCS_460	-30.123056	-101.307913	1.000	Art. 76.4(a)(ii): FOS + 60 M
EIP_OLCS_461	-30.127542	-101.326426	1.000	Art. 76.4(a)(ii): FOS + 60 M
EIP_OLCS_462	-30.131756	-101.345024	10.508	Art. 76.4(a)(ii): FOS + 60 M
EIP_OLCS_463	-30.173544	-101.541216	1.000	Art. 76.4(a)(ii): FOS + 60 M
EIP_OLCS_464	-30.177509	-101.559895	9.828	Art. 76.4(a)(ii): FOS + 60 M
EIP_OLCS_465	-30.215167	-101.743872	1.000	Art. 76.4(a)(ii): FOS + 60 M
EIP_OLCS_466	-30.218830	-101.762641	1.000	Art. 76.4(a)(ii): FOS + 60 M
EIP_OLCS_467	-30.222217	-101.781478	1.000	Art. 76.4(a)(ii): FOS + 60 M
EIP_OLCS_468	-30.225329	-101.800379	1.000	Art. 76.4(a)(ii): FOS + 60 M
EIP_OLCS_469	-30.228164	-101.819338	1.000	Art. 76.4(a)(ii): FOS + 60 M
EIP_OLCS_470	-30.230722	-101.838351	1.000	Art. 76.4(a)(ii): FOS + 60 M
EIP_OLCS_471	-30.233001	-101.857410	1.000	Art. 76.4(a)(ii): FOS + 60 M
EIP_OLCS_472	-30.235001	-101.876511	1.000	Art. 76.4(a)(ii): FOS + 60 M
EIP_OLCS_473	-30.236722	-101.895649	1.000	Art. 76.4(a)(ii): FOS + 60 M
EIP_OLCS_474	-30.238163	-101.914818	1.000	Art. 76.4(a)(ii): FOS + 60 M
EIP_OLCS_475	-30.239324	-101.934012	1.000	Art. 76.4(a)(ii): FOS + 60 M
EIP_OLCS_476	-30.240203	-101.953226	1.000	Art. 76.4(a)(ii): FOS + 60 M
EIP_OLCS_477	-30.240802	-101.972455	1.000	Art. 76.4(a)(ii): FOS + 60 M
EIP_OLCS_478	-30.241120	-101.991692	1.000	Art. 76.4(a)(ii): FOS + 60 M

Outer limit of the continental shelf fixed point	Latitude [decimal degrees]	Longitude [decimal degrees]	Distance to next point [M]	Article 76 provision invoked
EIP_OLCS_479	-30.241157	-102.010933	1.000	Art. 76.4(a)(ii): FOS + 60 M
EIP_OLCS_480	-30.240912	-102.030172	1.000	Art. 76.4(a)(ii): FOS + 60 M
EIP_OLCS_481	-30.240386	-102.049404	1.000	Art. 76.4(a)(ii): FOS + 60 M
EIP_OLCS_482	-30.239579	-102.068622	1.000	Art. 76.4(a)(ii): FOS + 60 M
EIP_OLCS_483	-30.238492	-102.087822	1.000	Art. 76.4(a)(ii): FOS + 60 M
EIP_OLCS_484	-30.237124	-102.106998	1.000	Art. 76.4(a)(ii): FOS + 60 M
EIP_OLCS_485	-30.235476	-102.126144	1.000	Art. 76.4(a)(ii): FOS + 60 M
EIP_OLCS_486	-30.233548	-102.145256	1.000	Art. 76.4(a)(ii): FOS + 60 M
EIP_OLCS_487	-30.231341	-102.164327	1.000	Art. 76.4(a)(ii): FOS + 60 M
EIP_OLCS_488	-30.228856	-102.183352	1.000	Art. 76.4(a)(ii): FOS + 60 M
EIP_OLCS_489	-30.226093	-102.202325	1.000	Art. 76.4(a)(ii): FOS + 60 M
EIP_OLCS_490	-30.223053	-102.221242	1.000	Art. 76.4(a)(ii): FOS + 60 M
EIP_OLCS_491	-30.219737	-102.240096	1.000	Art. 76.4(a)(ii): FOS + 60 M
EIP_OLCS_492	-30.216146	-102.258883	1.000	Art. 76.4(a)(ii): FOS + 60 M
EIP_OLCS_493	-30.212281	-102.277597	1.000	Art. 76.4(a)(ii): FOS + 60 M
EIP_OLCS_494	-30.208143	-102.296233	1.000	Art. 76.4(a)(ii): FOS + 60 M
EIP_OLCS_495	-30.203733	-102.314785	1.000	Art. 76.4(a)(ii): FOS + 60 M
EIP_OLCS_496	-30.199053	-102.333248	1.000	Art. 76.4(a)(ii): FOS + 60 M
EIP_OLCS_497	-30.194103	-102.351617	1.000	Art. 76.4(a)(ii): FOS + 60 M
EIP_OLCS_498	-30.188886	-102.369887	1.000	Art. 76.4(a)(ii): FOS + 60 M
EIP_OLCS_499	-30.183402	-102.388052	1.000	Art. 76.4(a)(ii): FOS + 60 M
EIP_OLCS_500	-30.177654	-102.406107	1.000	Art. 76.4(a)(ii): FOS + 60 M
EIP_OLCS_501	-30.171643	-102.424048	1.000	Art. 76.4(a)(ii): FOS + 60 M
EIP_OLCS_502	-30.165370	-102.441868	1.000	Art. 76.4(a)(ii): FOS + 60 M
EIP_OLCS_503	-30.158838	-102.459563	1.000	Art. 76.4(a)(ii): FOS + 60 M
EIP_OLCS_504	-30.152048	-102.477128	1.000	Art. 76.4(a)(ii): FOS + 60 M
EIP_OLCS_505	-30.145002	-102.494558	1.000	Art. 76.4(a)(ii): FOS + 60 M
EIP_OLCS_506	-30.137702	-102.511848	1.000	Art. 76.4(a)(ii): FOS + 60 M
EIP_OLCS_507	-30.130151	-102.528993	1.000	Art. 76.4(a)(ii): FOS + 60 M
EIP_OLCS_508	-30.122351	-102.545988	1.000	Art. 76.4(a)(ii): FOS + 60 M
EIP_OLCS_509	-30.114303	-102.562829	1.000	Art. 76.4(a)(ii): FOS + 60 M
EIP_OLCS_510	-30.106010	-102.579510	1.000	Art. 76.4(a)(ii): FOS + 60 M
EIP_OLCS_511	-30.097474	-102.596027	1.000	Art. 76.4(a)(ii): FOS + 60 M
EIP_OLCS_512	-30.088698	-102.612375	1.000	Art. 76.4(a)(ii): FOS + 60 M
EIP_OLCS_513	-30.079685	-102.628550	1.000	Art. 76.4(a)(ii): FOS + 60 M
EIP_OLCS_514	-30.070436	-102.644547	1.000	Art. 76.4(a)(ii): FOS + 60 M
EIP_OLCS_515	-30.060955	-102.660362	1.000	Art. 76.4(a)(ii): FOS + 60 M

Outer limit of the continental shelf fixed point	Latitude [decimal degrees]	Longitude [decimal degrees]	Distance to next point [M]	Article 76 provision invoked
EIP_OLCS_516	-30.051244	-102.675989	1.000	Art. 76.4(a)(ii): FOS + 60 M
EIP_OLCS_517	-30.041306	-102.691426	1.000	Art. 76.4(a)(ii): FOS + 60 M
EIP_OLCS_518	-30.031144	-102.706666	1.000	Art. 76.4(a)(ii): FOS + 60 M
EIP_OLCS_519	-30.020760	-102.721707	1.000	Art. 76.4(a)(ii): FOS + 60 M
EIP_OLCS_520	-30.010159	-102.736544	1.000	Art. 76.4(a)(ii): FOS + 60 M
EIP_OLCS_521	-29.999341	-102.751173	1.000	Art. 76.4(a)(ii): FOS + 60 M
EIP_OLCS_522	-29.988312	-102.765589	1.000	Art. 76.4(a)(ii): FOS + 60 M
EIP_OLCS_523	-29.977073	-102.779789	1.000	Art. 76.4(a)(ii): FOS + 60 M
EIP_OLCS_524	-29.965629	-102.793769	1.000	Art. 76.4(a)(ii): FOS + 60 M
EIP_OLCS_525	-29.953981	-102.807524	1.000	Art. 76.4(a)(ii): FOS + 60 M
EIP_OLCS_526	-29.942135	-102.821051	1.000	Art. 76.4(a)(ii): FOS + 60 M
EIP_OLCS_527	-29.930092	-102.834347	1.000	Art. 76.4(a)(ii): FOS + 60 M
EIP_OLCS_528	-29.917856	-102.847407	1.000	Art. 76.4(a)(ii): FOS + 60 M
EIP_OLCS_529	-29.905432	-102.860228	1.000	Art. 76.4(a)(ii): FOS + 60 M
EIP_OLCS_530	-29.892822	-102.872807	1.000	Art. 76.4(a)(ii): FOS + 60 M
EIP_OLCS_531	-29.880029	-102.885139	1.000	Art. 76.4(a)(ii): FOS + 60 M
EIP_OLCS_532	-29.867059	-102.897222	1.000	Art. 76.4(a)(ii): FOS + 60 M
EIP_OLCS_533	-29.853913	-102.909052	1.000	Art. 76.4(a)(ii): FOS + 60 M
EIP_OLCS_534	-29.840597	-102.920626	1.000	Art. 76.4(a)(ii): FOS + 60 M
EIP_OLCS_535	-29.827113	-102.931941	1.000	Art. 76.4(a)(ii): FOS + 60 M
EIP_OLCS_536	-29.813466	-102.942994	1.000	Art. 76.4(a)(ii): FOS + 60 M
EIP_OLCS_537	-29.799659	-102.953781	1.000	Art. 76.4(a)(ii): FOS + 60 M
EIP_OLCS_538	-29.785696	-102.964300	1.000	Art. 76.4(a)(ii): FOS + 60 M
EIP_OLCS_539	-29.771581	-102.974548	1.000	Art. 76.4(a)(ii): FOS + 60 M
EIP_OLCS_540	-29.757319	-102.984522	1.000	Art. 76.4(a)(ii): FOS + 60 M
EIP_OLCS_541	-29.742913	-102.994219	1.000	Art. 76.4(a)(ii): FOS + 60 M
EIP_OLCS_542	-29.728367	-103.003637	36.756	Art. 76.4(a)(ii): FOS + 60 M
EIP_OLCS_543	-29.441695	-103.624988	0.000	Intersection 200 M, Art. 76.4(a)(ii): FOS + 60 M



CONTINENTAL SHELF
NATIONAL COMMITTEE
CHILE

PARTIAL SUBMISSION OF CHILE TO THE COMMISSION
ON THE LIMITS OF THE CONTINENTAL SHELF

Eastern Continental Shelf
of Easter Island Province





CONTINENTAL SHELF
NATIONAL COMMITTEE
CHILE

Executive Summary

PARTIAL SUBMISSION OF CHILE TO THE COMMISSION
ON THE LIMITS OF THE CONTINENTAL SHELF

Eastern Continental Shelf
of Easter Island Province

